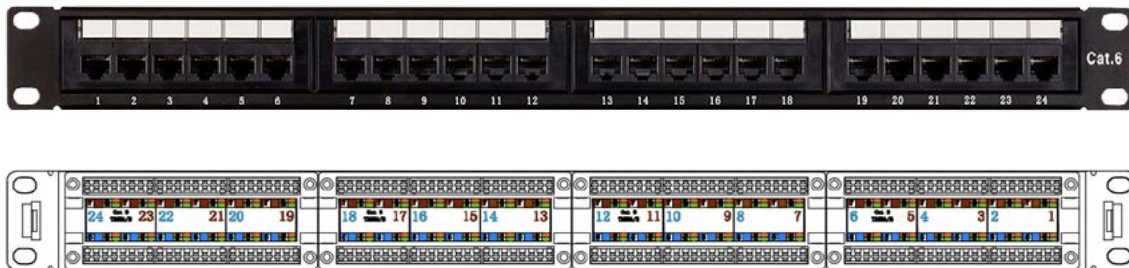


HUBNETIX Category 6

110 type 1U UTP 24 Port Patch Panel



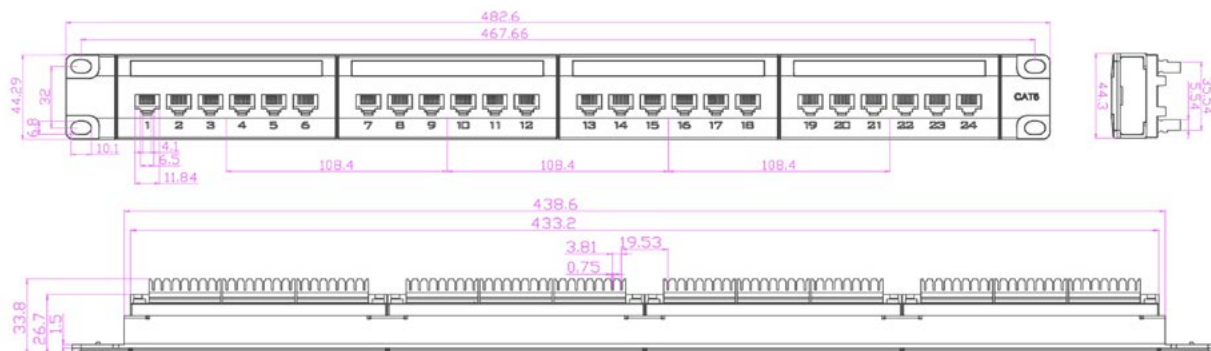
Physical Characteristics

- Jack : Phosphor bronze, 3-50 μ " gold plating over nickel in contact area
- IDC : 100 μ " nickel plated over phosphor bronze

Applications

- supports network convergence protocols, delivering maximum bandwidth and extended reliability for all LAN, multimedia, and Power over Ethernet applications

Structure



Ordering Info

Part Number	Description
HLY-PP24PC6UK110	HUBNETIX Cat 6 UTP 1U 24 Port 19 inch Patch Panel, KRONE & 110 IDC, with cable manager.

HUBNETIX CORPORATION
71-75, Shelton Street, London, UK.
www.hubnetix.com

The dimensions and specifications in this document are for reference purposes only and are subject to change without notice. Consult HUBNETIX Corp. for the latest dimensions and design specifications.

