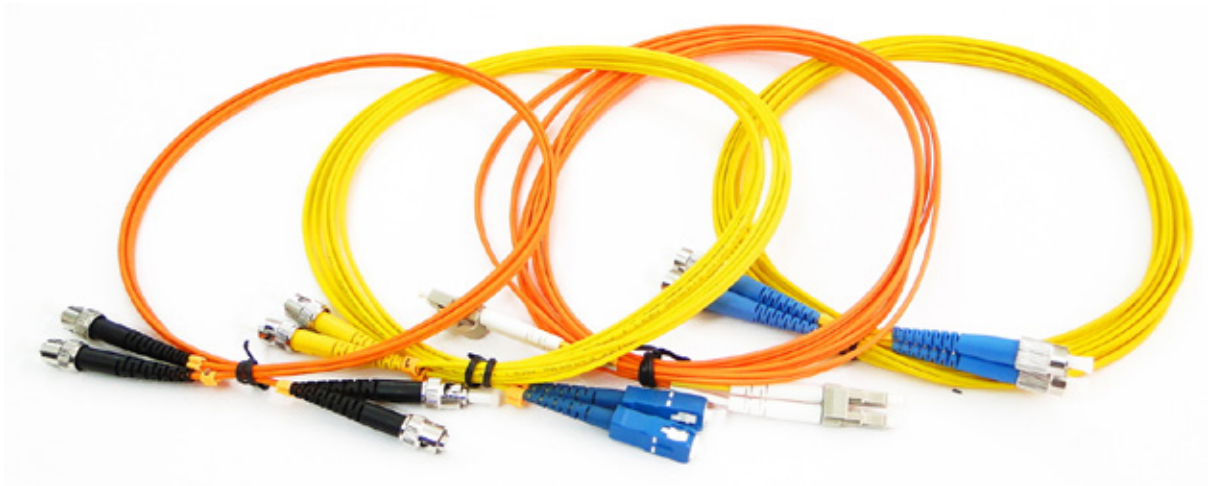


# HUBNETIX

## Fibre Optic Patch Cords & Pigtails



### Description

HUBNETIX LANLINE Fibre optic patch cords and pig tails are the ideal solution for structured cabling systems and testing & measurement applications. This high performance FO patch cords and pig tails are manufactured using state of the art manufacturing process to meet wide range of wavelength. RoHS complied Fibre optic patch cords and pig tails include LC,FC,SC,ST,MU,MTRJ,E2000 connectors and the high quality connector terminations provide low insertion loss and high return loss. All the LANLINE patch cords and pigtails shall meet or exceed requirements of TIA/EIA standards.

### Features

- Excellent exchangeability
- Available with LC, FC, SC, ST, MU, MTRJ, E2000 connectors
- Available in Single mode & Multimode Fibre cables
- High quality ferrules and housings
- Ferrule Interface Type: UPC to UPC, APC to APC, APC to UPC
- Low insertion loss and high return loss
- High durability
- High temperature stability

### Application


- Datacenter & Datacom
- Pre-terminated assembly interconnection
- Testing & measurement equipment
- CATV, WAN, LAN & Telecom networks
- FTTX deployments


### Standard Compliance


- IEC, TIA/EIA, NTT and JIS specifications


# Fibre Optic Patch Cords & Pigtails





SC Connector type	Technical Specifications			
	Parameters	SC/PC	SC/UPC	SC/APC
	Working Temperature (°C)	- 40 to +80		
	Insertion Loss (dB)	≤0.3	≤0.3	≤0.3
	Return Loss (dB)	≥45	≥50	≥60
	Durability(Times)	≥600	≥600	≥600
	Tensile strength(N)	≥55	≥55	≥55

ST Connector type	Technical Specifications			
	Parameters	ST/PC	ST/UPC	ST/APC
	Working Temperature (°C)	-25 to +75		
	Insertion Loss (dB)	≤0.25	≤0.25	≤0.25
	Return Loss (dB)	≥45	≥50	≥60
	Durability(Times)	≥600	≥600	≥600
	Tensile strength(N)	≥55	≥55	≥55

FC Connector type	Technical Specifications			
	Parameters	FC/PC	FC/UPC	FC/APC
	Working Temperature (°C)	-40 to +80		
	Insertion Loss (dB)	≤0.25	≤0.25	≤0.25
	Return Loss (dB)	≥45	≥50	≥60
	Durability(Times)	≥600	≥600	≥600
	Tensile strength(N)	≥55	≥55	≥55

LC Connector type	Technical Specifications			
	Parameters	LC/PC	LC/UPC	LC/APC
	Working Temperature (°C)	-25 to +75		
	Insertion Loss (dB)	≤0.25	≤0.25	≤0.25
	Return Loss (dB)	≥45	≥50	≥60
	Durability(Times)	≥600	≥600	≥600
	Tensile strength(N)	≥55	≥55	≥55

MTRJ Connector type	Technical Specifications		
	Parameters	MTRJ/PC	MTRJ/UPC
	Working Temperature (°C)	- 40 to +80	
	Insertion Loss (dB)	≤0.25	≤0.25
	Return Loss (dB)	≥45	≥50
	Durability(Times)	Exert a force of 1N for 1 hour at a distance of 0.5meter from the rear of connector	
	Tensile strength(N)	≥55	≥55

MU Connector type	Technical Specifications		
	Parameters	MU/PC	MU/UPC
	Working Temperature (°C)	- 40 to +80	
	Insertion Loss (dB)	≤0.25	≤0.25
	Return Loss (dB)	≥45	≥50
	Durability(Times)	≥600	≥600
	Tensile strength(N)	≥55	≥55

## Fibre Optic Patch Cords &amp; Pigtails



## Ordering info

	AA	B	C	DD	E	FF	G	HH	I
Patch cord / Pigtail	Connector Type End 1	Connector Finish End 1	Cable Diameter	Fiber Type	Cable type	Connector Type End 2	Connector Finish End 2	Length (meter)	Material
<b>FP</b>	<b>ST</b> – ST <b>SC</b> – SC <b>FC</b> – FC <b>LC</b> – LC <b>MT</b> – MTRJ <b>MU</b> – MU	<b>P</b> – PC <b>U</b> – UPC <b>A</b> – APC	<b>09</b> – .9mm <b>20</b> – 2.0mm <b>30</b> – 3.0mm <b>XX</b> – Other	<b>S1</b> – <b>Singlemode</b> OS1 9/125µm <b>S2</b> – <b>Singlemode</b> OS2 9/125µm (ITU G.652.D) <b>M1</b> – <b>Multimode</b> OM1 62.5/125µm <b>M2</b> – <b>Multimode</b> OM2 50/125µm <b>M3</b> – <b>Multimode</b> OM3 50/125µm <b>M4</b> – <b>Multimode</b> OM4 50/125µm	<b>S</b> – Simplex <b>D</b> – Duplex <b>T</b> – Tight buffered <b>L</b> – Loose tube <b>X</b> – Other	<b>ST</b> – ST <b>SC</b> – SC <b>FC</b> – FC <b>LC</b> – LC <b>MT</b> – MTRJ <b>MU</b> – MU <b>Blank</b> – Pigtail	<b>P</b> – PC <b>U</b> – UPC <b>A</b> – APC <b>Blank</b> – Pigtail	<b>MM</b>	<b>P</b> – PVC <b>Z</b> – LSZH

## Part Number Builder

Part Number Standard Format	Description
<b>HLX-FPAABCCDDEFFG-HHI</b>	Fibre patch cord, connector type 1, connector finish 1,cable diameter, Fibre type, cable type, connector type 2, connector finish 2,length meters,Material
Part Number Example	Description
<b>HLX-FPSTP09M1SSTP-03P</b>	Fiber patch cord, ST connector type 1,PC connector finish 1,.9mm diameter,OM1,simplex,ST connector type 2,PC connector finish 2,3 meters,PVC

.for length put D instead of decimal point

**HUBNETIX CORPORATION**  
71-75, Shelton Street, London, UK.  
[www.hubnetix.com](http://www.hubnetix.com)

The dimensions and specifications in this document are for reference purposes only and are subject to change without notice. Consult HUBNETIX Corp. for the latest dimensions and design specifications.

